

MANOR II INDUSTRIAL CENTER OF MCKEESPORT

MCKEESPORT, PA



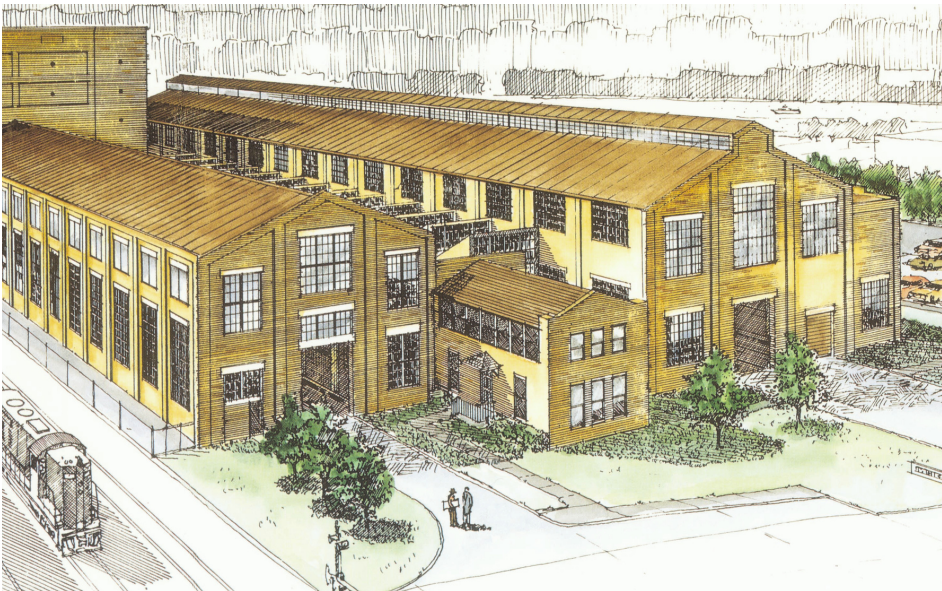
WWW.RIDC.ORG

RIDC

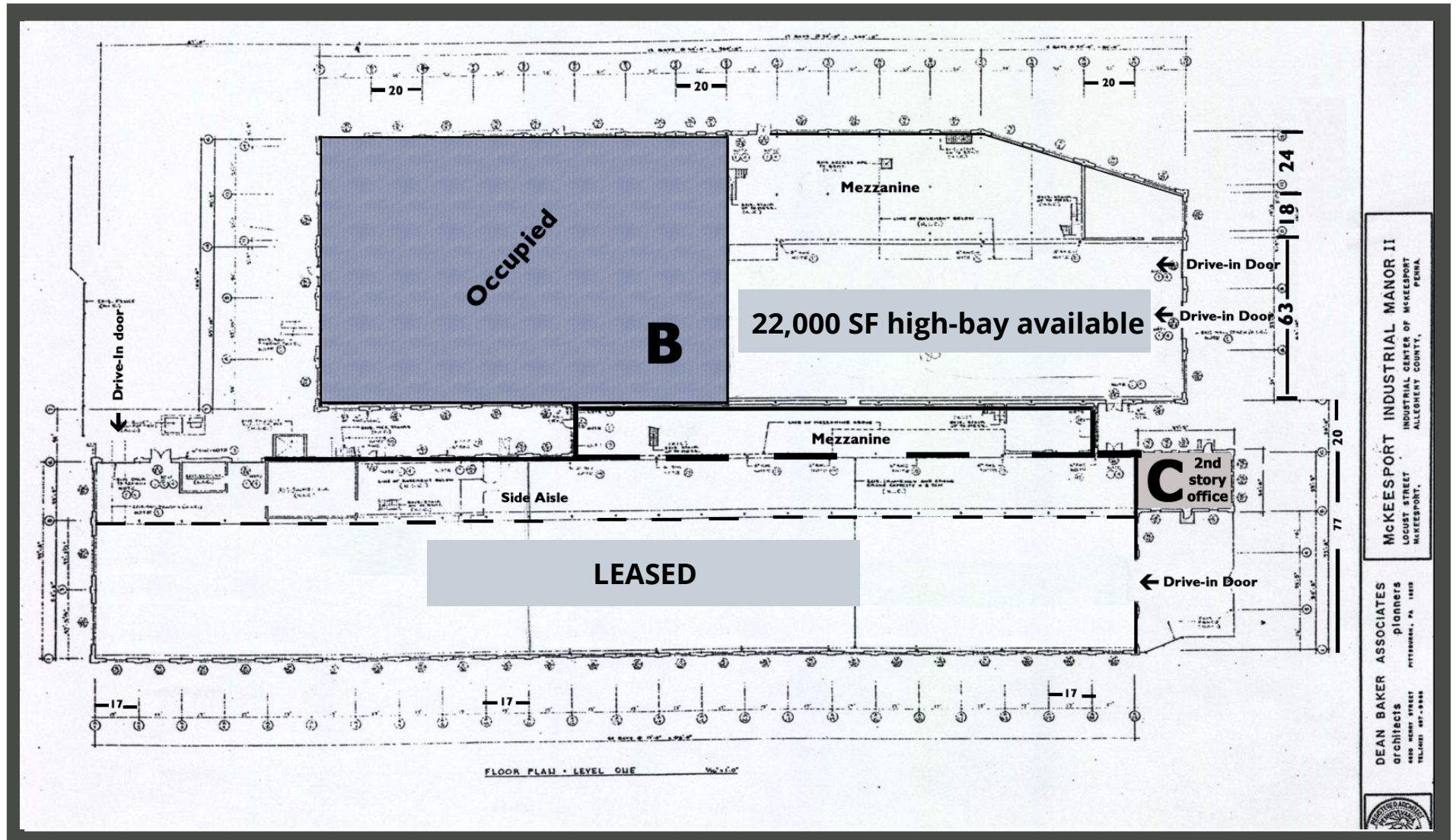
Regional Industrial Development Corporation

320 LOCUST ST

- 22,000 SF VACANCY
- HISTORIC FLEX BUILDING
- 33' MAX CLEAR HEIGHT
- 20 X 24' COLUMN SPACING
- LARGE OVERHEAD DOORS
- LANDLORD MANAGED
- SIGNAGE OPPORTUNITY



320-380 LOCUST STREET - FIRST FLOOR PLAN



ABOUT THE PARK

The 133-acre Industrial Center of McKeesport was once home to metal tube and pipe mill companies like U.S. Steel. Starting in 1990, RIDC began major clean-up efforts including environmental remediation, selective demolition and the sale of miscellaneous scrap at the site. Since then RIDC has renovated and converted four existing buildings and constructed two new facilities. RIDC owns eight buildings in the park totaling over 733,000 square feet, which are home to 8 companies that employ over 200 people, contributing significant property and income tax revenue to the city of McKeesport.

NEARBY AMENITIES

Restaurants

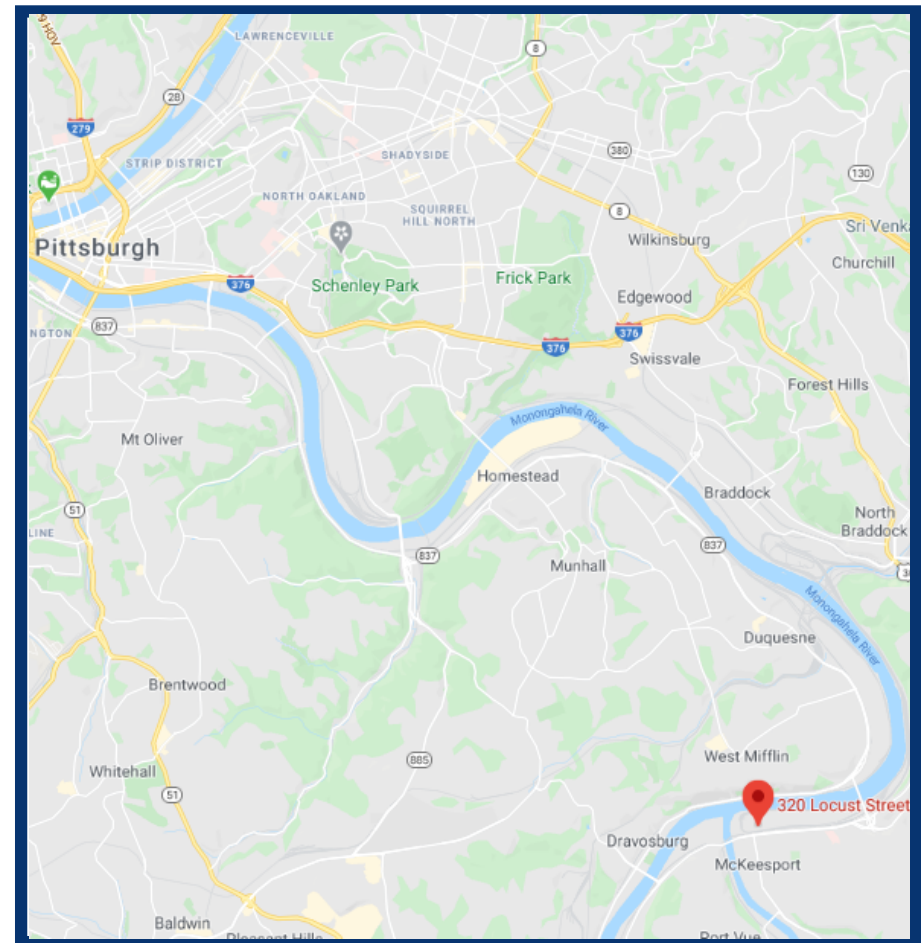
Superior Motors
Primanti Brothers
Randy's Beer Barrel
Homeville Trolley Stop
Wolf's Pub
Asian House
Papa John's Pizza
And Many More!

Lodging

Holiday Inn Express Pgh East
Hampton Inn Waterfront
Courtyard By Marriott
Residence Inn Monroeville
Double Tree Monroeville

Entertainment

Kennywood Amusement Park
Brew Gentleman Craft Brewery
Great Allegheny Passage
Westwood Golf Course



CONTACT US

EMILY SIPES, LEASING MANAGER
ESIPES@RIDC.ORG
412-697-3203



RIDC

Regional Industrial Development Corporation

611 William Penn Place, Suite 600 ▪ Pittsburgh, PA 15219
(412) 471-3939 ▪ www.ridc.org

Regional Industrial Development Corporation (RIDC) makes no guarantees, warranties or representations as to the completeness or accuracy of the information included. Information was obtained by reliable sources and is believed to be accurate. Rental terms and dimensions are approximate and specifications are subject to change without notice. Presentation of this property is subject to errors, omissions, change of price or conditions prior to sale or lease, or withdrawal without notice.