

KEYSTONE COMMONS WEST SHOP INDUSTRIAL MALL

TURTLE CREEK & EAST PITTSBURGH, PA



WWW.RIDC.ORG

RIDC

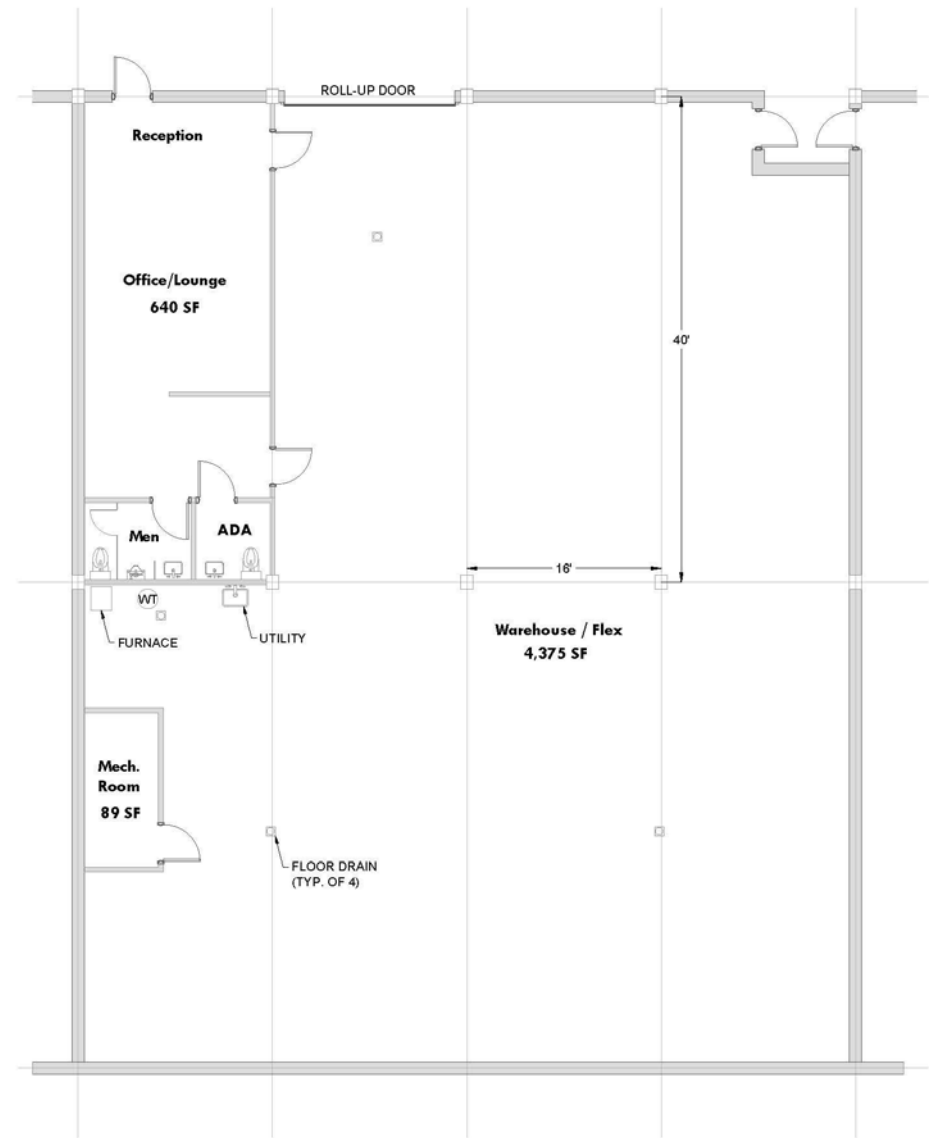
Regional Industrial Development Corporation

528 BRADDOCK AVE

- 5,104 SQUARE FEET
- FLEX SPACE
- OVERHEAD DOOR
- PRIVATE BATHROOMS & OFFICE
- SHARED DOCKS
- SEMI TRAILER ACCESSIBLE
- FREE PARKING
- LANDLORD MANAGED



528 Braddock Ave - 5,104 SF Keystone Commons



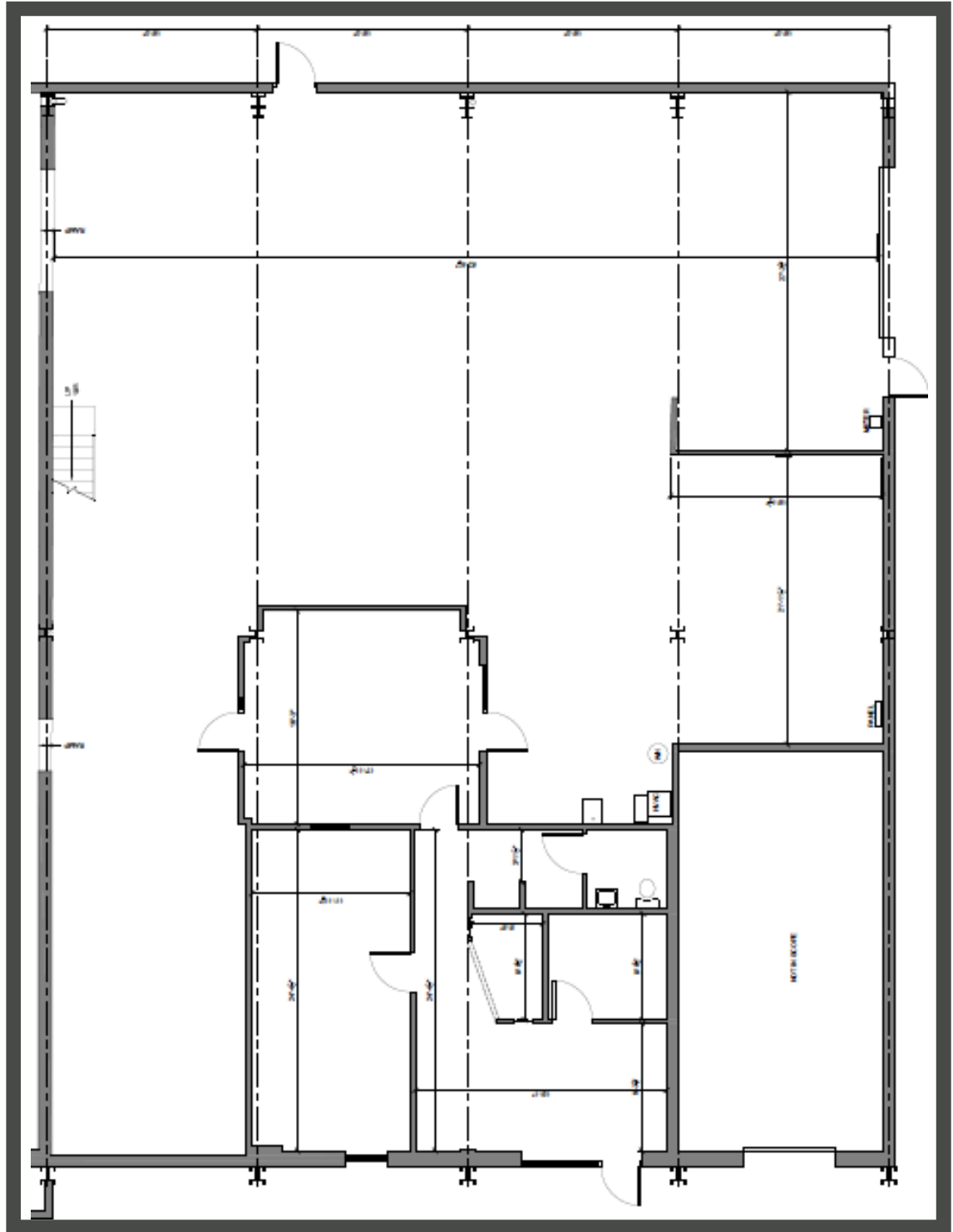
① First Floor
3/32" = 1'-0"

First Floor Plan

Depiction, area and dimensions are approximate

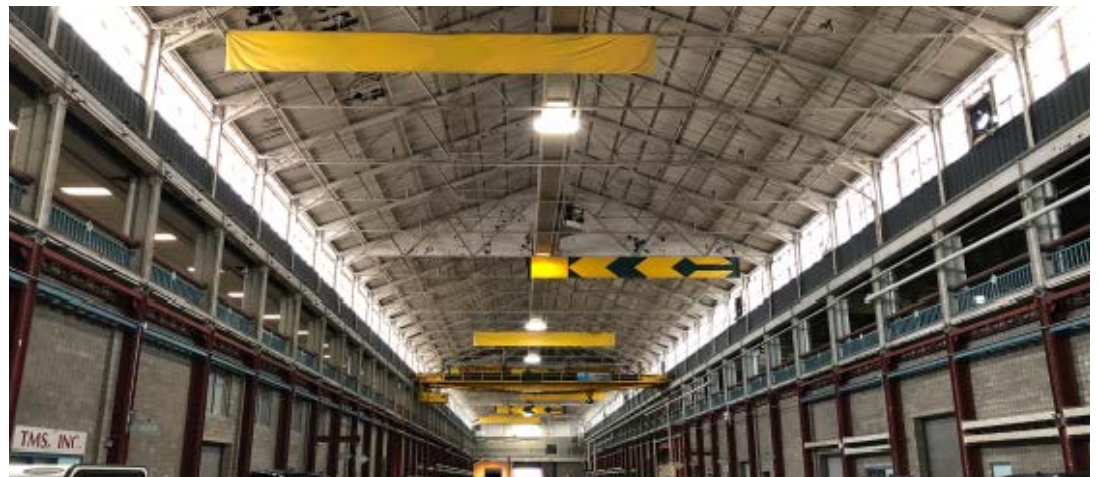
534B BRADDOCK AVE

- 4,513 SQUARE FEET
- FLEX SPACE
- OVERHEAD DOOR
- PRIVATE BATHROOM & OFFICES
- SHARED DOCKS
- SEMI TRAILER ACCESSIBLE
- FREE PARKING
- LANDLORD MANAGED



510 BRADDOCK AVE

- 8,800 SQUARE FEET
- FLEX SPACE
- 2 OVERHEAD DOORS
- 3 OVERHEAD CRANES (20T, 3T)
- PRIVATE BATHROOM & OFFICES
- SHARED DOCKS
- SEMI TRAILER ACCESSIBLE
- FREE PARKING



ABOUT THE PARK

RIDC bought the former Westinghouse Electric Corporation's East Pittsburgh complex with the goal of redeveloping it into a world class, multi-use, urban industrial facility. The site features 2.25 million SF of industrial, flex warehouse, manufacturing and office space housing significant regional companies including Holtec, Taktl, Geotechnics, Innovative Controls, and Brush General Motor Services. The West Shop Industrial Mall has been a long-time growth space for manufacturing firms, and is also now home to a growing technology sector.

NEARBY AMENITIES

Restaurants

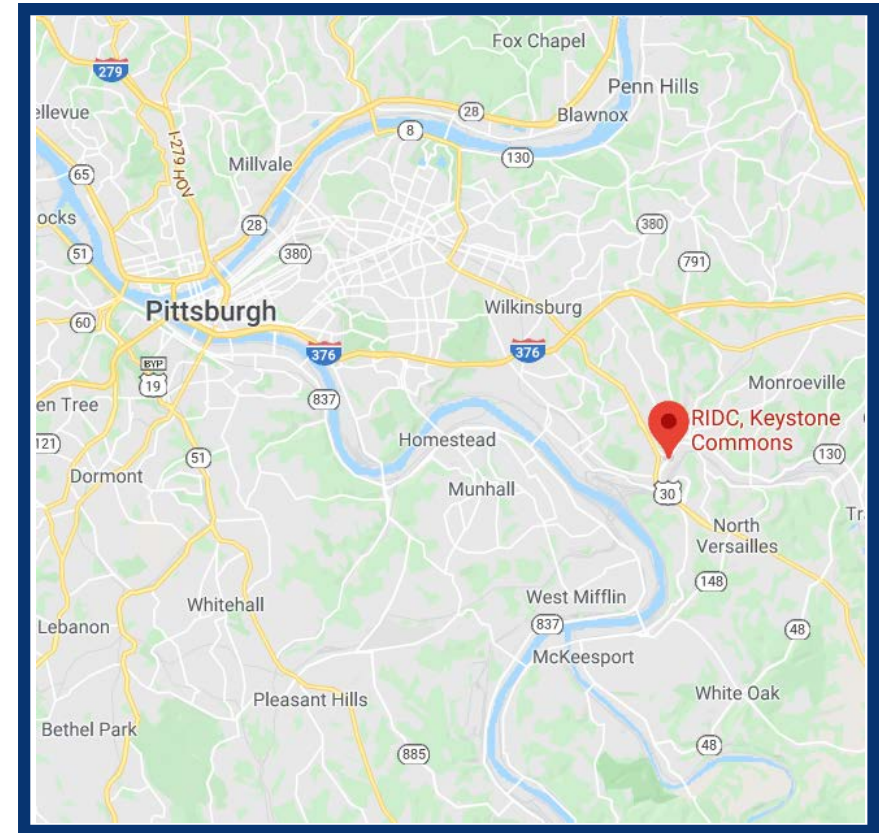
Roman Bistro
Shelley Pie Pizza
Primanti Brothers
Dunkin'
Hunan Palace
Jodi B's
Vincent's Pizza
Taco Bell
Domino's Pizza
And Many More!

Lodging

Holiday Inn Express Pgh East
Hampton Inn Waterfront
Courtyard By Marriott
Residence Inn Monroeville
Double Tree Monroeville

Entertainment

SHAPE Training
Forest Hills Shopping Center
Forest Hills Park
The Massage & Wellness Center



CONTACT US

EMILY SIPES, LEASING MANAGER

ESIPES@RIDC.ORG

412-697-3203



RIDC

Regional Industrial Development Corporation

611 William Penn Place, Suite 600 ▪ Pittsburgh, PA 15219
(412) 471-3939 ▪ www.ridc.org

Regional Industrial Development Corporation (RIDC) makes no guarantees, warranties or representations as to the completeness or accuracy of the information included. Information was obtained by reliable sources and is believed to be accurate. Rental terms and dimensions are approximate and specifications are subject to change without notice. Presentation of this property is subject to errors, omissions, change of price or conditions prior to sale or lease, or withdrawal without notice.