

# KEYSTONE COMMONS BUSINESS ASSISTANCE CENTER

EAST PITTSBURGH, PA



# RIDC

[WWW.RIDC.ORG](http://WWW.RIDC.ORG)

Regional Industrial Development Corporation

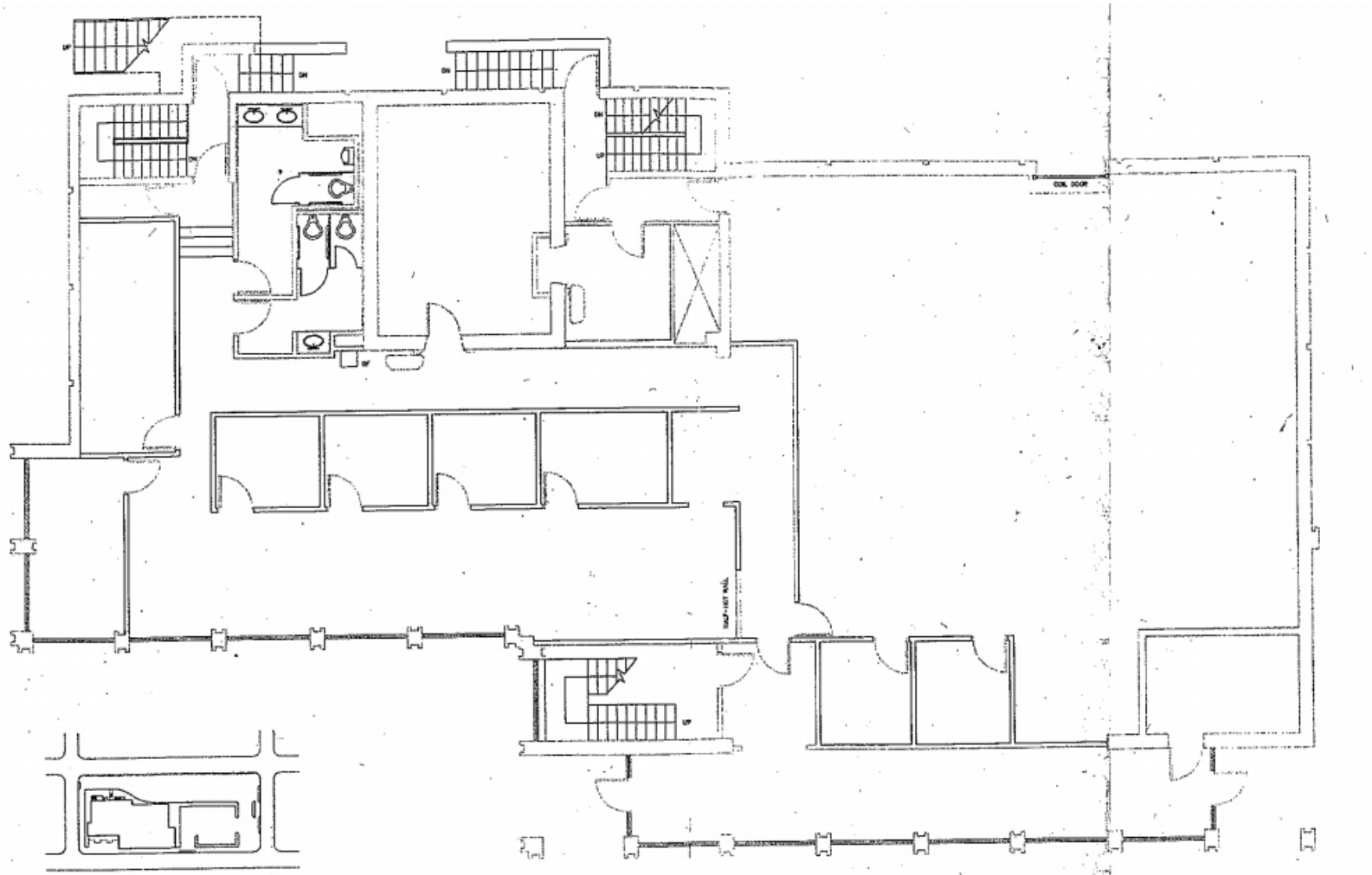
## 701 BRADDOCK AVE

- 10,687 SQUARE FEET
- STANDALONE FLEX BUILDING
- 20' WAREHOUSE CLEARANCE
- OVERHEAD DOOR
- 3:1000 PARKING LOT
- LANDLORD MANAGED
- ACCESS TO RT-30, 376-EAST
- SIGNAGE OPPORTUNITY





# 701 BRADDOCK AVENUE - FIRST FLOOR PLAN



# ABOUT THE PARK

RIDC bought the former Westinghouse Electric Corporation's East Pittsburgh complex with the goal of redeveloping it into a world class, multi-use, urban industrial facility. The site features 2.25 million SF of industrial, flex warehouse, manufacturing and office space housing significant regional companies including Holtec, Taktil, Geotechnics, Innovative Controls, and Brush General Motor Services. The West Shop Industrial Mall has been a long-time growth space for manufacturing firms, and is also now home to a growing technology sector.

## NEARBY AMENITIES

### Restaurants

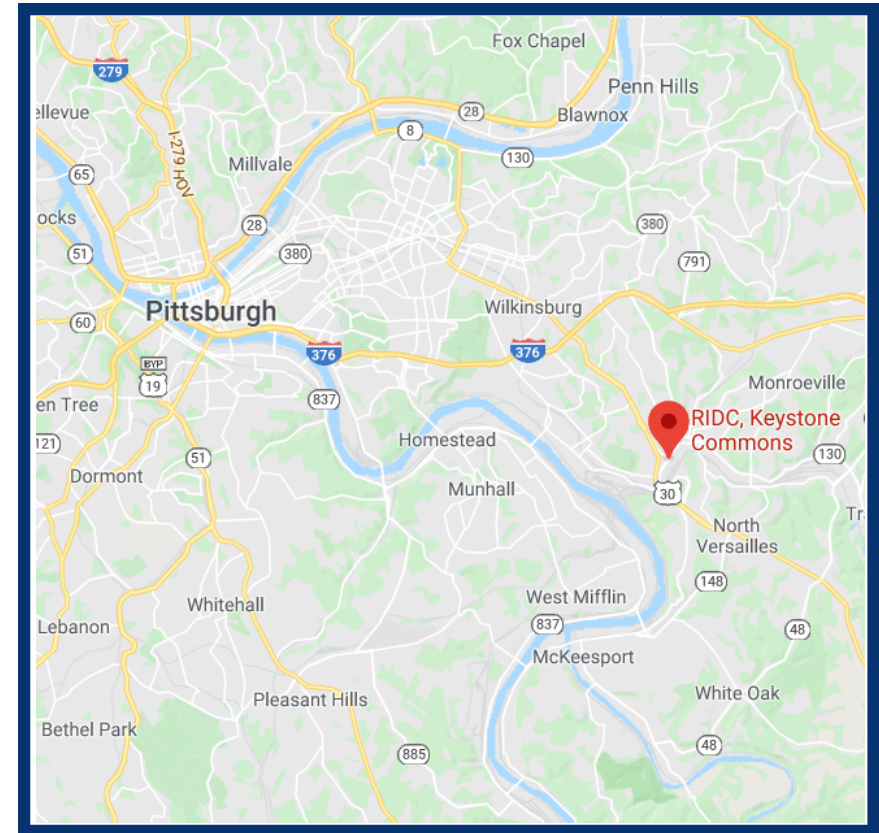
Roman Bistro  
Shelley Pie Pizza  
Primanti Brothers  
Dunkin'  
Hunan Palace  
Jodi B's  
Vincent's Pizza  
Taco Bell  
Domino's Pizza  
And Many More!

### Lodging

Holiday Inn Express Pgh East  
Hampton Inn Waterfront  
Courtyard By Marriott  
Residence Inn Monroeville  
Double Tree Monroeville

### Entertainment

SHAPE Training  
Forest Hills Shopping Center  
Forest Hills Park  
The Massage & Wellness Center



## CONTACT US

EMILY SIPES, LEASING MANAGER

ESIPES@RIDC.ORG

412-697-3203



# RIDC

Regional Industrial Development Corporation

611 William Penn Place, Suite 600 ▪ Pittsburgh, PA 15219  
(412) 471-3939 ▪ [www.ridc.org](http://www.ridc.org)

Regional Industrial Development Corporation (RIDC) makes no guarantees, warranties or representations as to the completeness or accuracy of the information included. Information was obtained by reliable sources and is believed to be accurate. Rental terms and dimensions are approximate and specifications are subject to change without notice. Presentation of this property is subject to errors, omissions, change of price or conditions prior to sale or lease, or withdrawal without notice.